

Environmental
Protection
Activity
Data File

2003 Activities,
Facts and Figures

●Profile of
NIPPON TELEGRAPH AND
TELEPHONE CORPORATION
(as of March 31, 2003)
●Consolidated profile
(as of March 31, 2003)

■ Company name: NIPPON TELEGRAPH AND TELEPHONE CORPORATION (NTT)
■ Address: 3-1 Otemachi 2-Chome, Chiyoda-ku, Tokyo 100-8116 Japan ■ Established: April 1, 1985
■ Capital: 937.95 billion yen ■ Number of employees: 3,178 ■ Website: http://www.ntt.co.jp/index_e.html
■ Employees: 207,000 ■ Number of companies: 334

1 Economic Performance



*This statement has been prepared in accordance with the accounting principles generally accepted in the United States (U.S. GAAP). Figures from the previous year recorded herein are also calculated using converted figures from the same period of the previous year according to US accounting standards.

1 Environmental Accounting in Fiscal 2002

■ Environmental Conservation Costs (¥100 million)

Listing by the guidelines of the Ministry of the Environment	Environmental conservation cost Investment	Cost
(1) Business area cost	55.6	169.9
• Pollution prevention cost	1.2	3.4
• Global environmental conservation cost	50.4	25.1
• Resource circulation cost	4.0	141.4
(2) Upstream/downstream cost	2.4	32.1
(3) Administration cost	3.3	59.4
(4) R&D cost	40.9	118.4
(5) Social activity cost	0.0	1.3
(6) Environmental remediation cost	0.0	0.0
Total	102.2	381.1

■ Environmental Conservation Benefits

Benefits expressed in monetary units (¥100 million)	Benefits expressed in physical quantity units (10,000 t)
Reduced expenses from decreased energy consumption 14.9	Amount of CO ₂ emission reduced
Amount gained from recycling 18.2	• Benefit of power saving measures 4.5
Reduction of waste disposal expenses with recycling 0.6	• Benefit of introduction and use of low pollution vehicles 0.3
The amount of reduced expenses of new purchases through reuse	• Other benefits 0.1
• Dismantled telecommunications facilities 223.3	Total quantity recycled 93
• Wastes at offices 0.4	
Other economic benefit 19.3	
Total 276.7	

■ Investments and R&D Costs (¥100 million)

Total investment in current period	19,776.2
Total R&D cost in current period	3,959.7

The total amount of investments and research and development costs for the period under review is the sum total of NTT Group companies subject to consolidated accounting.

Environmental Accounting of the NTT Group

- Scope of Inclusion
The companies subject to consolidated environmental accounting are NTT (holding company), NTT EAST, NTT WEST, NTT Communications, NTT DoCoMo, NTT DATA, and their group companies (130 companies in total)
- Period of Report
From April 1, 2002 to March 31, 2003
- Method of Calculation
● Accounting is conducted in accordance with "NTT Group Environmental Accounting Guidelines (2002 version)." This criteria conforms to the "Environmental Accounting Guidelines (2002 version)" issued by the Ministry of the Environment.
● In the NTT Group's consolidated environmental accounting table, conservation costs and conservation benefits were described. Conservation costs are expressed in currency units, while conservation benefits are classified into those that can be expressed in monetary units and those expressed in units of physical quantity.
● Conservation costs were tabulated separately as capital investments (environmental investment) and expenses (environmental expense). Personnel costs are included under expenses, although depreciation expenses are not.
● In order to more efficiently consolidate the NTT Group's environmental accounting, an Internet-based tabulation system was utilized.

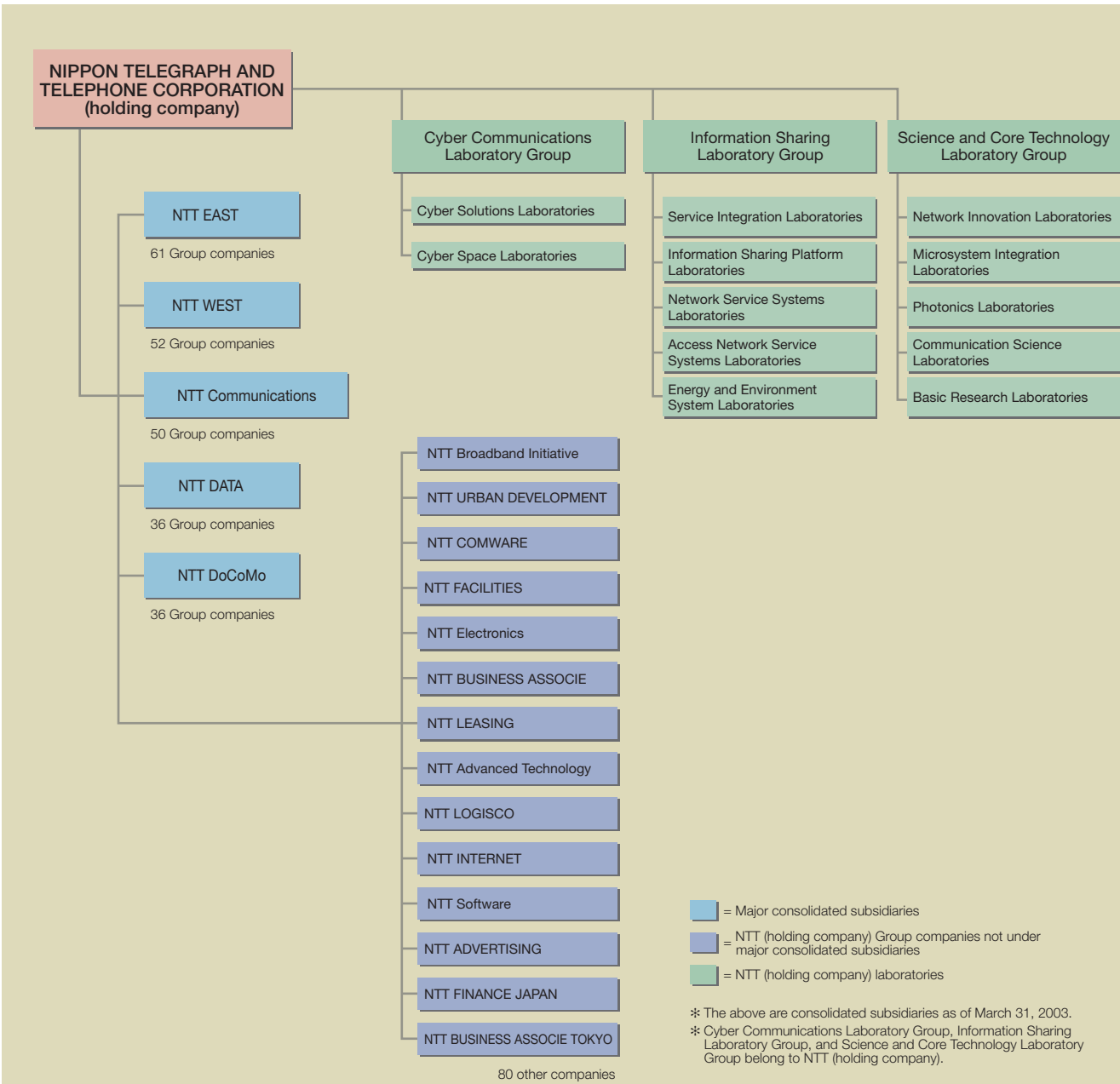
- Tabulated Results
● Total environmental conservation cost was 48.33 billion yen (investment: approximately 10.2 billion yen, expense: approximately 38.1 billion yen).
● For environmental protection impacts, economic impact was 27.67 billion yen. The quantity recycled was 930,000 tons. The major items recycled included communications cables, concrete telephone poles, and telephone directories.
- Others
● These are the deemed effects of research and development results. The data were not included in the environmental accounting, but reported on page 15 along with the actual content of research and development.
● The environmental protection impacts (expressed in units of physical quantity) related to IT services provided to customers were similarly estimated. The data were reported on page 9 along with the content of services.

●Corporate and Group Profiles

The NTT Group, with the holding company NTT at its core, offers a wide range of customer services through its wholly-owned subsidiaries NTT EAST, NTT Communications, NTT DATA, and NTT DoCoMo. Group companies such as NTT COMWARE, NTT-ME, and NTT FACILITIES maintain resources for the entire Group, including software, communications facilities, power facilities, and buildings. Each subsidiary explores new business possibilities and endeavors in order to expand its business domains.

These efforts are supported by two types of R&D (research and development): basic R&D, which is centralized at the holding company level; and specific application R&D, which is engaged in by each subsidiary. Although it is unusual for a holding company to operate its own R&D department, NTT considers R&D a driving force for the management and development of the NTT Group today and in the future.

1 NTT Group Consolidated Companies



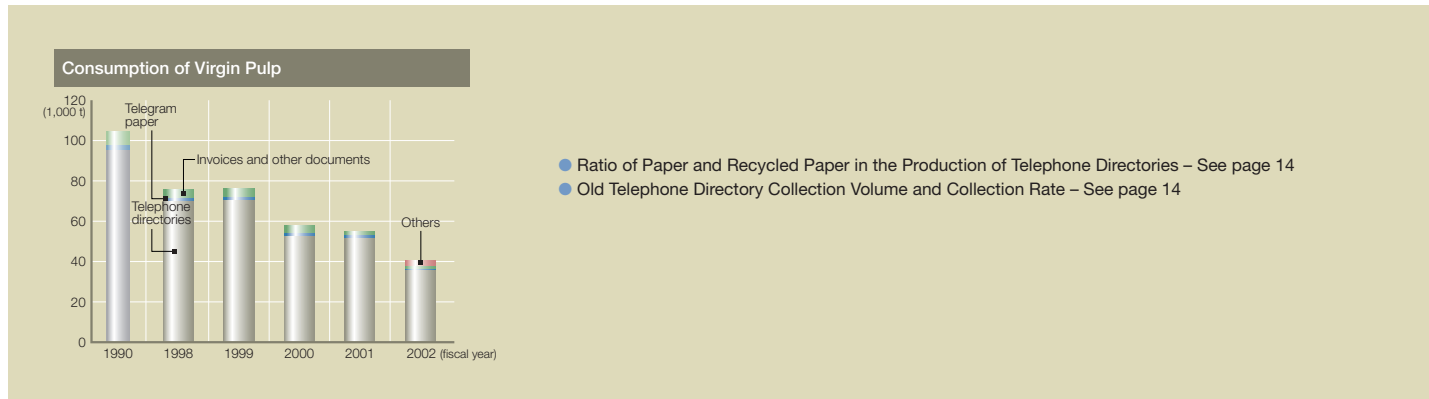
- = Major consolidated subsidiaries
- = NTT (holding company) Group companies not under major consolidated subsidiaries
- = NTT (holding company) laboratories

* The above are consolidated subsidiaries as of March 31, 2003.
* Cyber Communications Laboratory Group, Information Sharing Laboratory Group, and Science and Core Technology Laboratory Group belong to NTT (holding company).

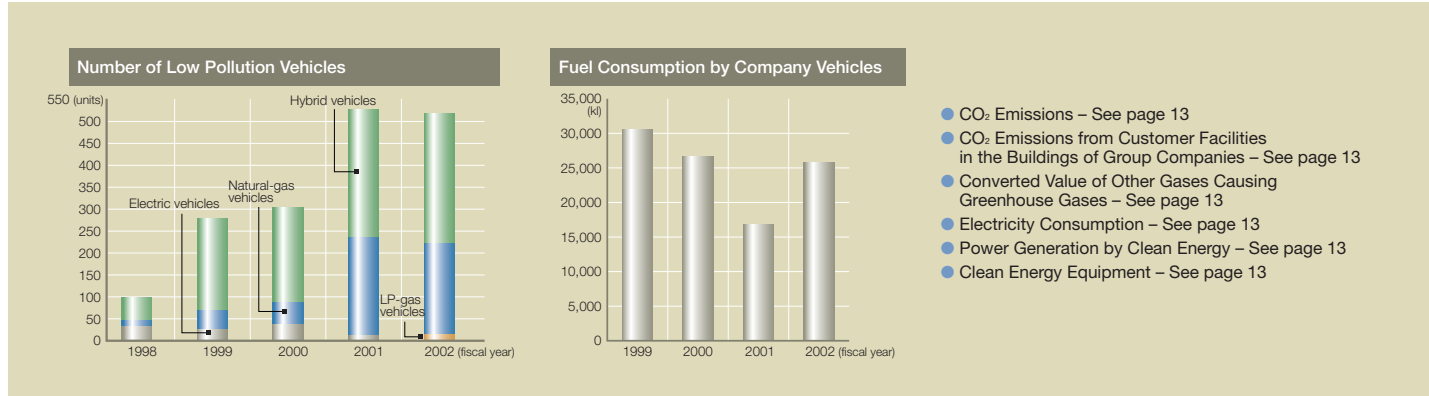
The NTT Group's environmental protection activities are implemented in 438 companies including the consolidated companies above.

1. The unit “t” (tons) represents the amount of materials used.
2. For the amount of energy, the unit “J” (joules) is used, although “kWh” (kilowatt hours) is utilized for some data to facilitate ready comparison in the amounts of electricity. To convert kWh to J, we have used the factor 10,250 kJ/kWh based on the “Law Enforcement Policies for the Rationalization of Energy Use.”
3. For the amount of the greenhouse gas, the unit “t-CO₂” is used. To convert the amount of CO₂ emitted with the use of electricity, calculate by the average electricity discharged coefficient 0.378 kg-CO₂/kWh.

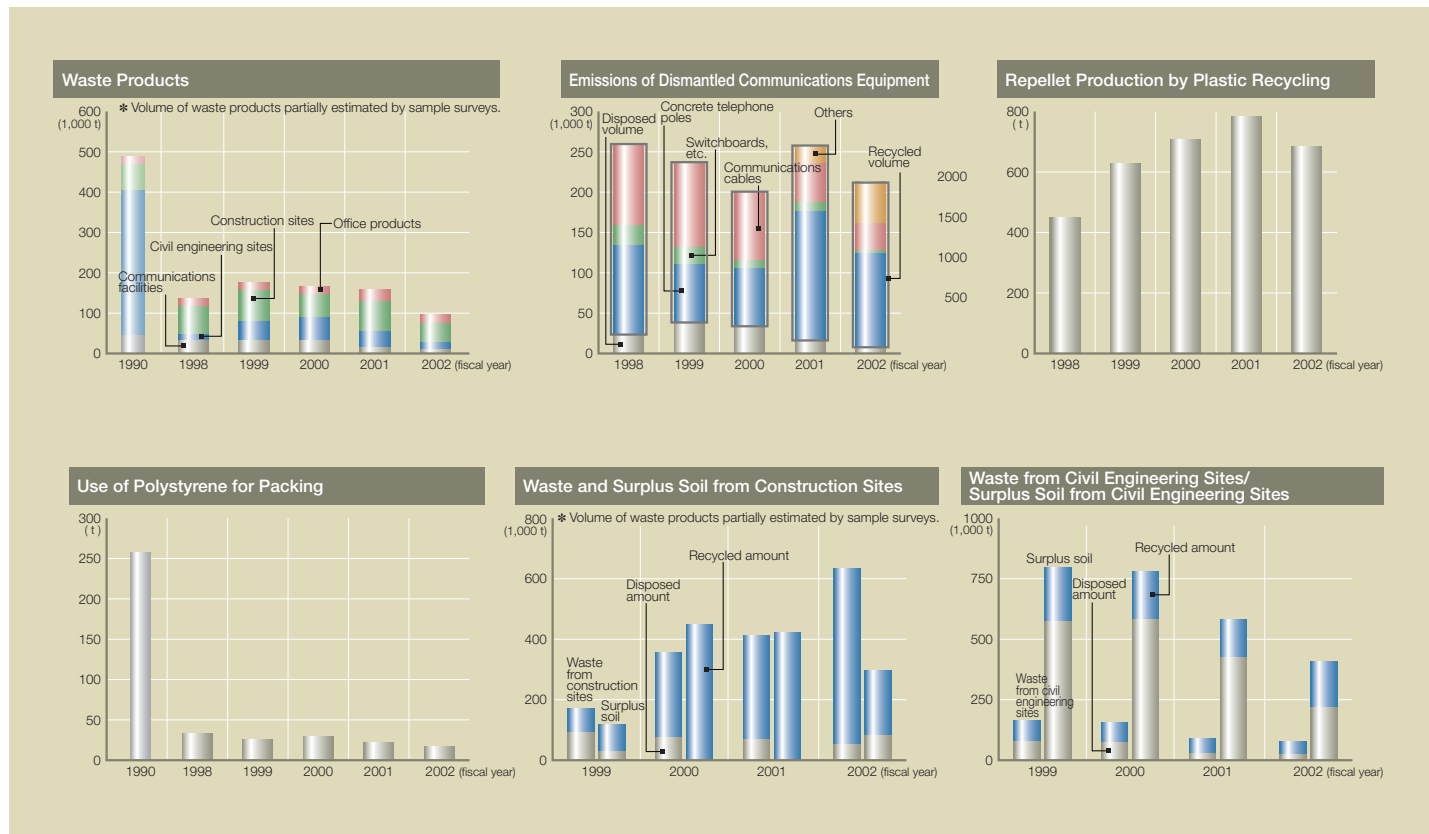
Paper Resource Management



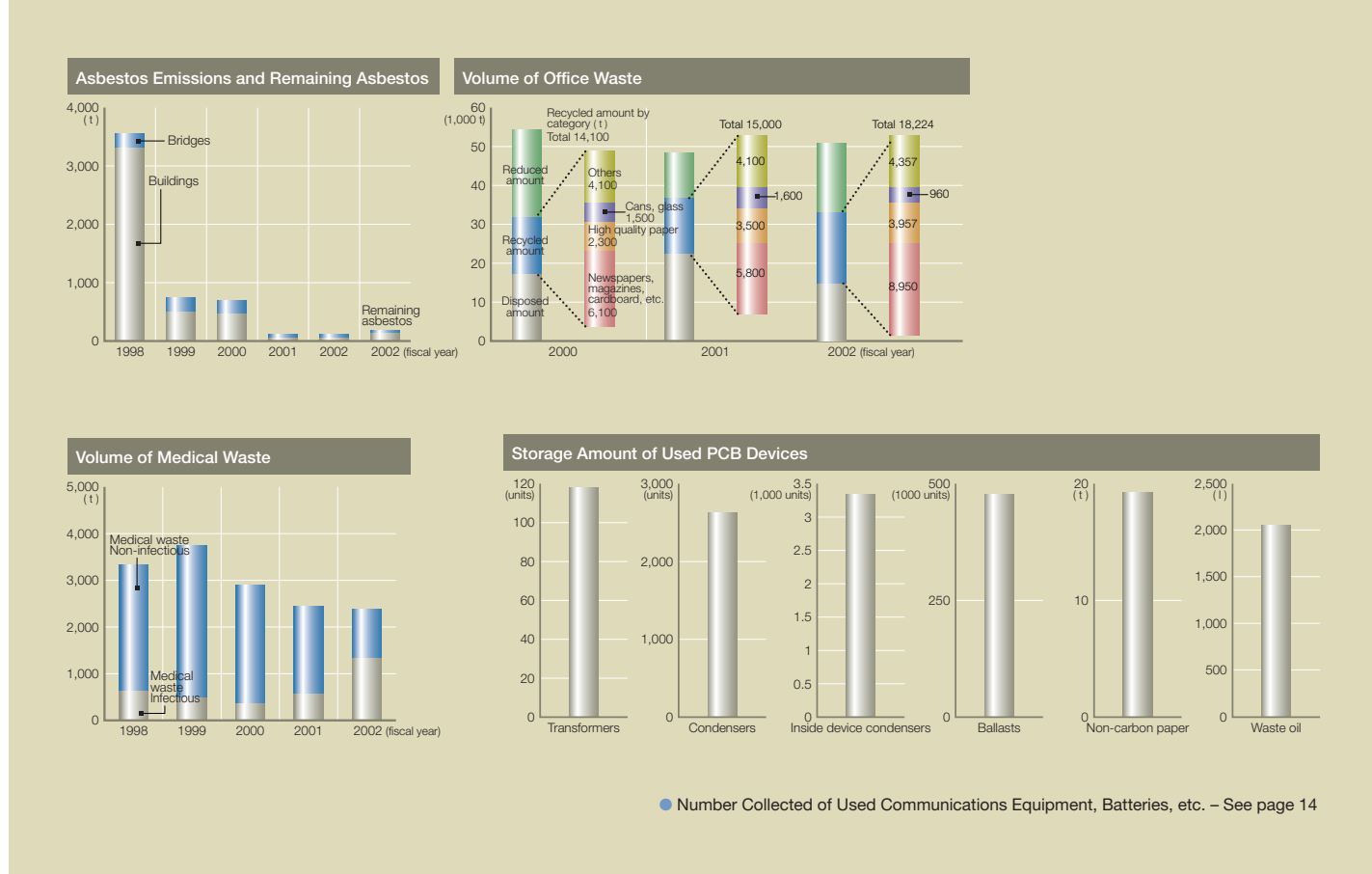
Measures against Global Warming



Waste Management



Waste Management (Continued)



Protection of the Ozone Layer, Other Activities

