

ClimateForce Rainforest Regeneration

Custom applications to help regrow the
Daintree Rainforest and others around the
world

How NTT DATA helps ClimateForce

Conservation Problem

Huge swaths of ancient rainforests have been clear cut for farming, ranching, urbanization etc. The loss of these areas has a serious impact on global health for all species.

The NTT DATA SMART Platform and ClimateForce Solution

ClimateForce has set out to regenerate an old banana farm that can be found in the Daintree Rainforest in Queensland, Australia. With their staff of biologists, other scientists and volunteers, and now NTT DATA's Smart Management Platform, ClimateForce is conducting various regrowth trials with the goal of providing other land-owners with solid data, costing and biodiversity models and tools to help them regenerate their land.

SMART Rainforest Project

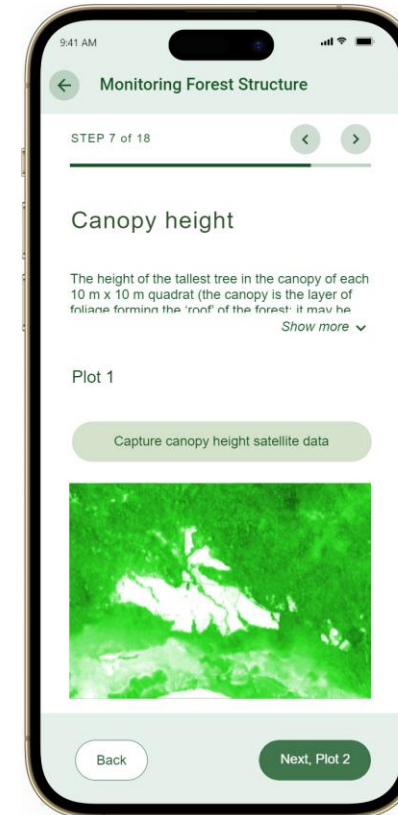
A 3-year project initiated in January of 2024 between NTT Group, NTT DATA, Inc. and Climate Force to inspire data-driven insights for the acceleration of rainforest regeneration globally

Planting Site Survey Tool

An offline, mobile application used in the field to gather growth, health and situational data

Benefits

- Allows for offline, digital capture of site health
- Ensures consistency in data collection
- Harnesses satellite data to measure canopy height and closure
- Greatly decreases the time a site survey takes by > 50%
- Enables faster processing and sharing of data insights, predictions and AI-based recommendations



Land Regeneration Estimator Tool

A web-based application used by landowners and conservationists for guidance on planting plans, predicted biodiversity improvement, carbon ROI, and costing information

Benefits

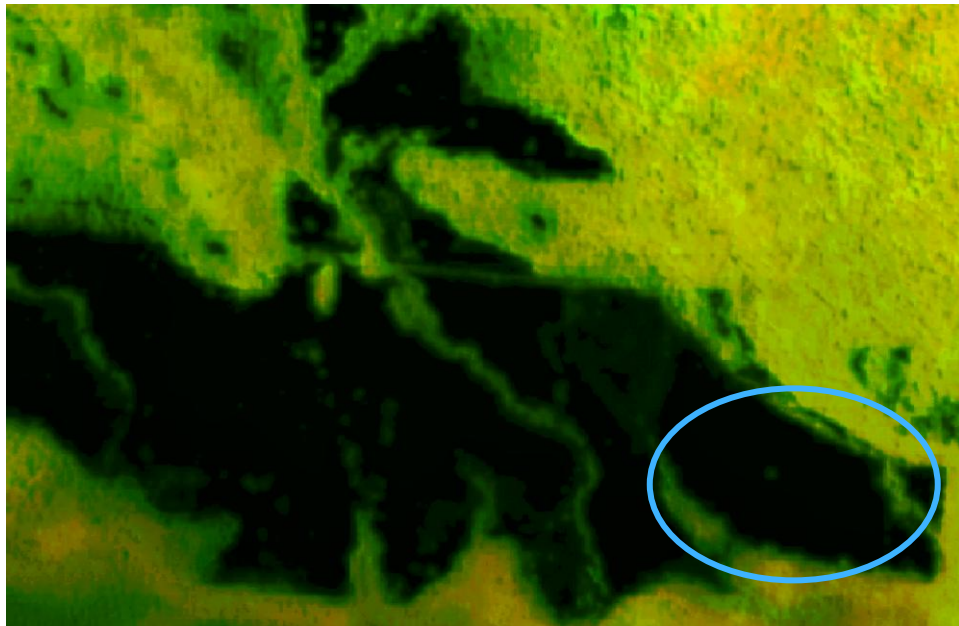
- Allows for meaningful plans and predictions anywhere in the world
- Satellite data ensures accurate projections of carbon sequestration and biodiversity expectations
- Provides land-owners with detailed planting plans built around yearly budgets
- Reports showcase Return on Carbon Investment and Carbon Sequestration expectations

The screenshot displays the 'Single Site Regeneration' interface. At the top, the header includes the NTT DATA logo and 'ClimateForce Site Regeneration Estimator'. The main content area is titled 'Single Site Regeneration' and features a progress indicator with four steps: 1. Site Location, 2. Details, 3. Cost, and 4. Plan. The 'Site Location' step is active, showing instructions: 'To start a new estimate, import site survey (preferred) or enter lat/long coordinates to use loc-b. To access an existing estimate, enter the build number.' Below this, there is an 'IMPORT SITE SURVEY' button with a download icon, a text input field for 'Latitude & Longitude' containing '-16.26, 145.44' with a 'Planet Satellite' icon to its right, and a 'Build Number' input field. A 'CONTINUE' button is positioned below the inputs. To the right of the form is a satellite map showing a green field with a blue location pin. The bottom of the page features the NTT DATA logo.

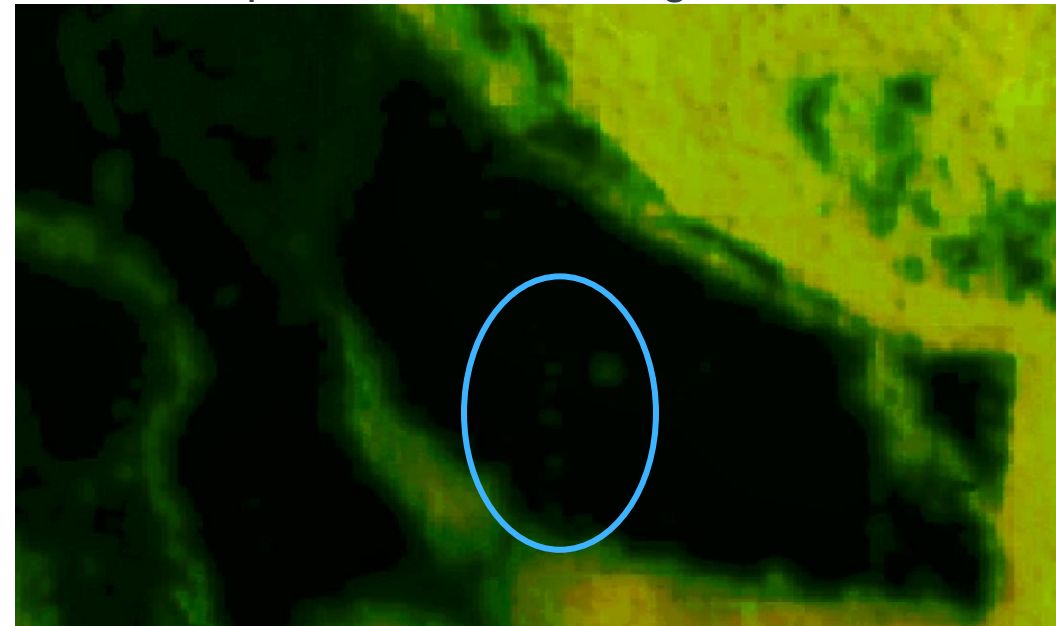
Satellite Carbon Stock Data shows ClimateForce is starting to make progress

Planet Satellite images of the regeneration site in 2021 prior to beginning the reforestation project (left) and, 2024 after just 2 years of growth (right, zoomed) where carbon sequestration is beginning to show in the newly planted out areas.

2021 regeration site
Plant-out 1, 2, 3 circled



2024 Zoomed image of Plant-out 1 circled,
carbon sequestration becoming visible



Darker areas show less carbon sequestration, lighter areas show more carbon being absorbed by the rainforest



About

NTT DATA SMART Management Platform (SMP)

NTT DATA Smart Solutions

Facing the challenges of the Data and AI revolution

Organizations are challenged with gaining insights from the explosion of disparate data incoming from innumerable sources.

What are NTT DATA Smart Solutions

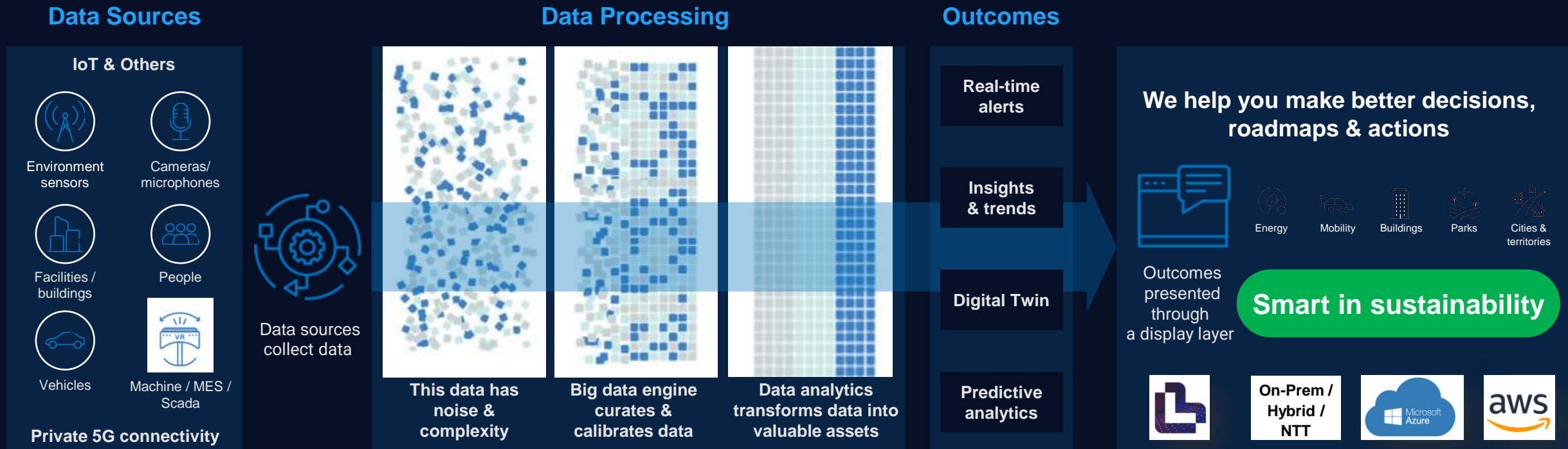
- A set of cross industry, data-driven analytic applications
- That process data from virtually any data source
- Designed to transform this data into actionable intelligence and business outcomes
- Powered by the NTT DATA Smart Management Platform (SMP)

Manufacturing	Healthcare	Real Estate	Transportation
Cities	Entertainment	Insurance	Retail
Sustainability			



NTT DATA Smart Management Platform: A foundation for Sustainability

A set of people-centric IoT-enabled edge analytics applications that process & transform ESG data from virtually any data source into actionable intelligence & outcomes. Solutions aligned to your business & sustainability goals including carbon accounting and your broader ESG.

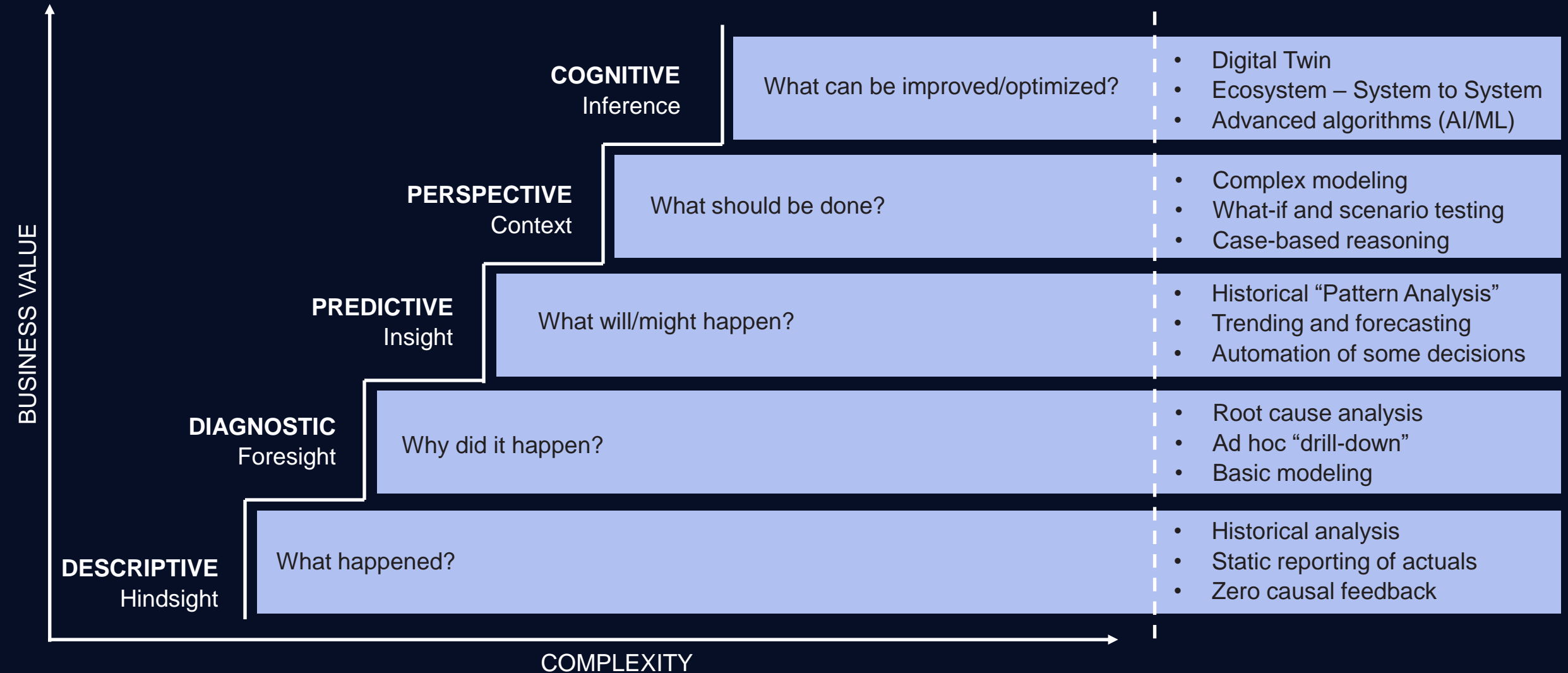


BENEFITS

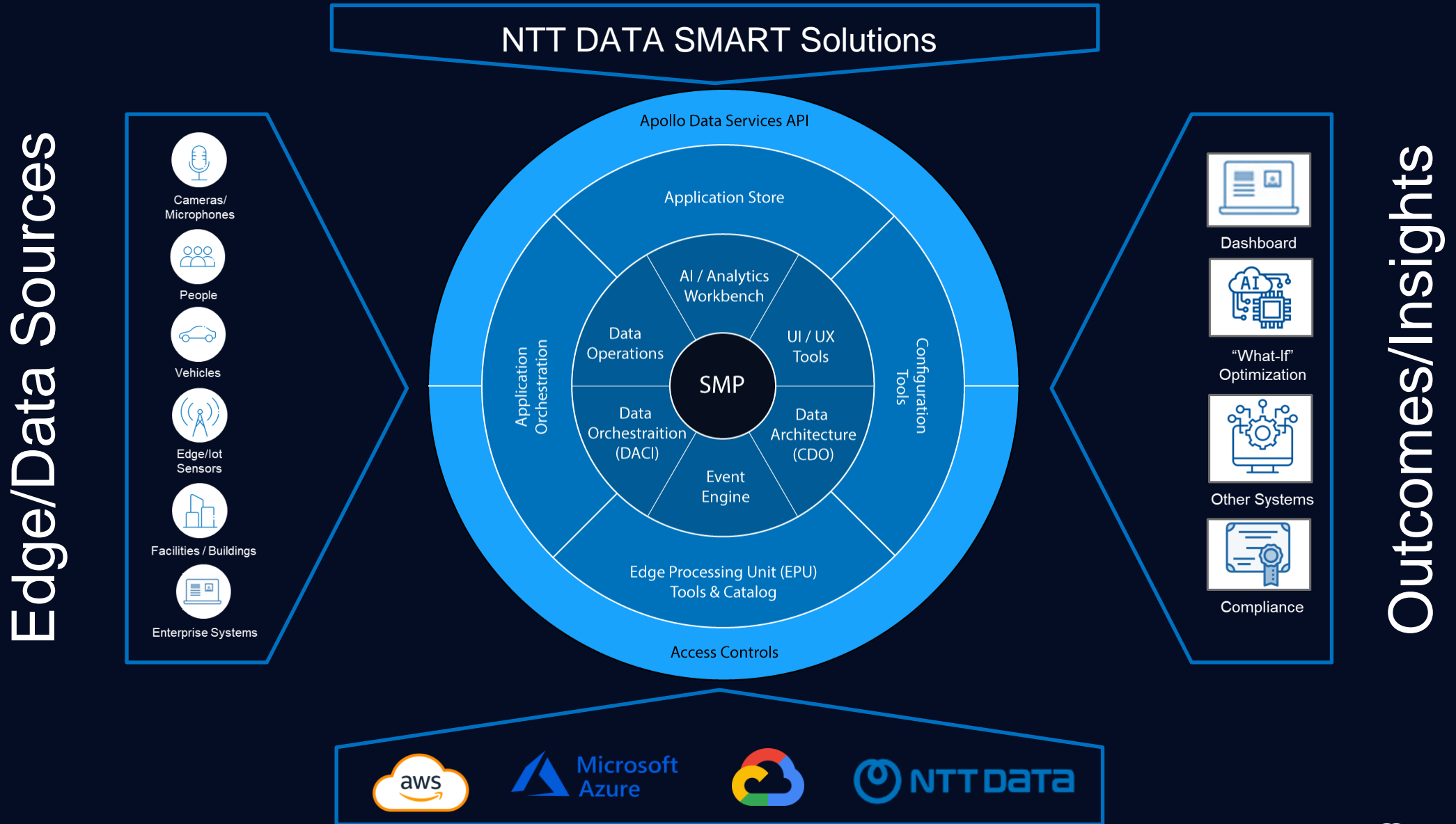
- ✔ Enhanced situational and sustainability awareness
- ✔ Improved responsiveness
- ✔ Force multiplier: technology helping human decision makers
- ✔ Increased efficiency and cost savings

NTT DATA shapes its roadmap to reduce the CO2e emissions of its data centers based on actionable insights from SMART.

The Value of Data Driven Analytics



What does the Smart Management Platform (SMP) do?



NTT Smart Solutions use cases

Although the platform has re-usable components, clients can buy the use cases they need and the ones that better suit their business and sustainability outcomes.



NTT Smart Solutions Customers



