

Future Smart Office Framework

NTT Germany

Once a time before COVID-19



- old-fashioned office – a place to work
- “my own” onsite dedicated office desk
- classic remote video only meetings
- always-on equipment
- high energy consumption



During the pandemic people were forced to stay at home



All offices were forced to shut down to limit spread of corona virus:

- People were forced to work from home without equipment over night.
- Social contacts took place over video / online meetings.
- New culture developed during this time – the new normal



...some of them never returned to the office.



[Images: DALL-E]

The new way of designing office space post pandemic

Employee Experience



Ask employees for their preferences without the right to enforcement: Build creative places, offer different types of meeting place sizes: 1:1 // 2-5 // 5-10 // >10 (open vs. confidential)

Covid-19 and beyond



Calculate on basis of workplace blueprints the need of space in dedicated NTT locations and co-work locations

Cooperation & Integration



Being attractive for employees by a EX centric workplace culture – carried by trust and commitment
Use innovative technology for being innovative toward customers
Ask employees for their way of working – survey

Culture & Vision



Promote between NTT legal companies the opportunities and willing to work physically under one roof

Technology



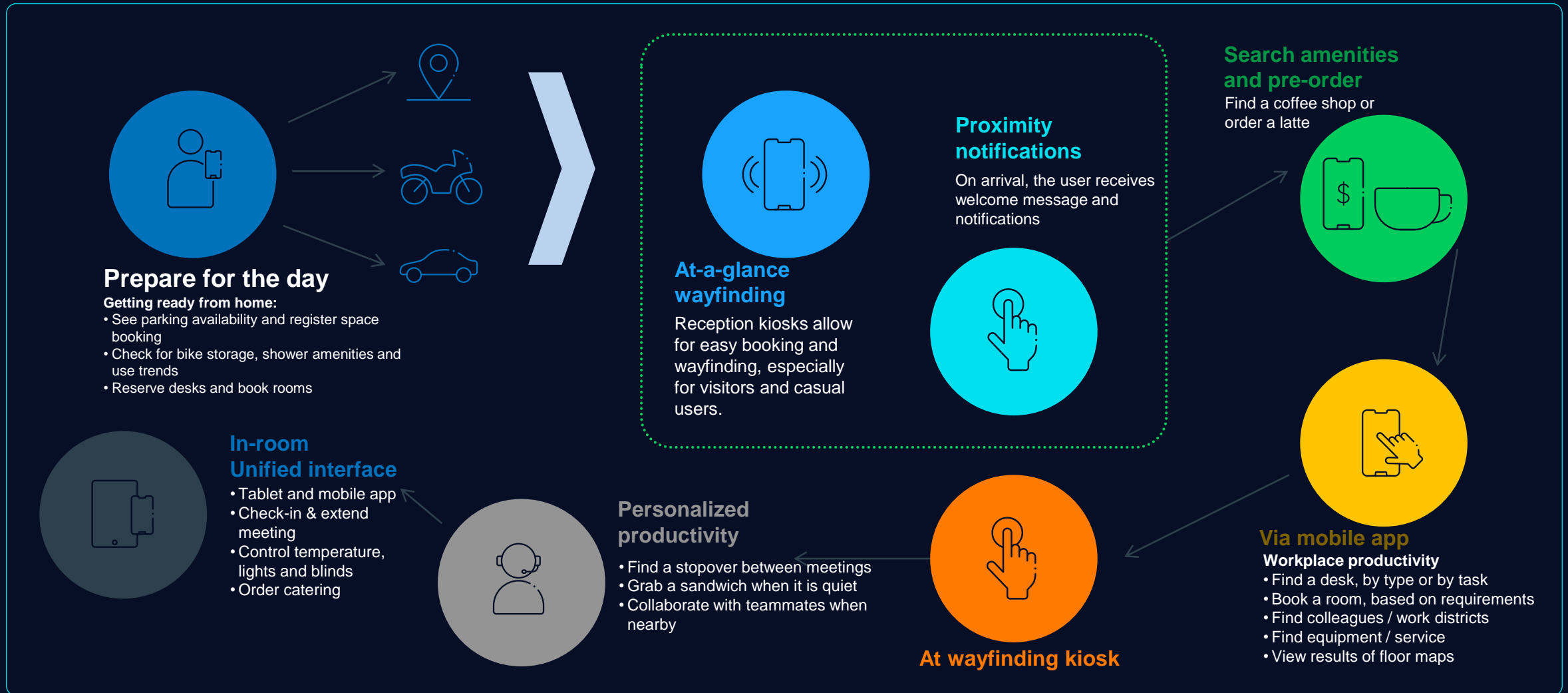
Define „persona“-blueprints - type of workers-profiles to derive workplace needs

Cost Optimization



Check the potential need of additional technology. At which working place the technology is not supportive enough to have a good interactive working --> enhance and expand. Reduce systems with no or less use in the past

A typical day of an employee in our new office world



Our prime environmental sustainability aspects



Measure and control - energy

- Smart desk power controller
- Disable wifi when not used
- Usage of low power digital signage



Integration with building automation systems

- Integration of energy control systems with building automation systems
- Coordinate energy-saving measures with lighting, HVAC and security systems



Non-office hours reduction

- Automated shutdown procedures
- Deactivate wifi automatically
- Automatic switch-off of smart desks



React on occupancy

- Smart desk power controller
- Disable wifi when not used
- Switch off lights if not used



Smart desk power controller

- Allow users to control the power supply to their desks
- Enable the scheduling of power outlets based on occupancy or work hours
- Provide real-time energy consumption feedback to users, encouraging responsible energy use



Education and awareness

- Energy monitoring dashboards
- Raise awareness among employees about conscious energy use
- Train employees on the proper use of smart office devices and systems



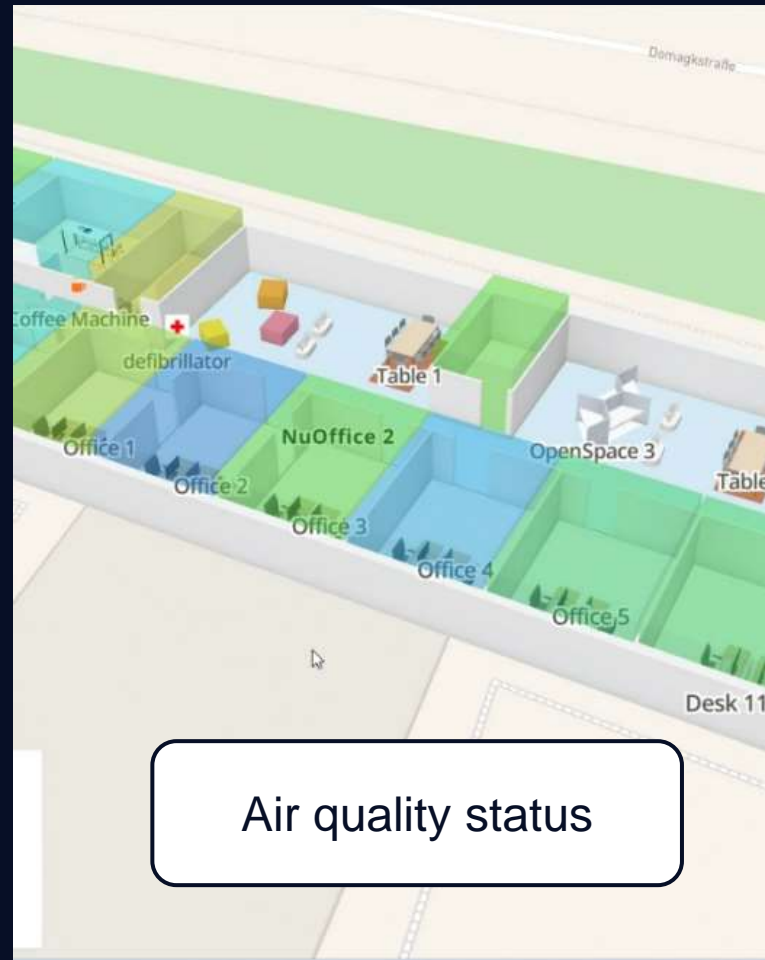
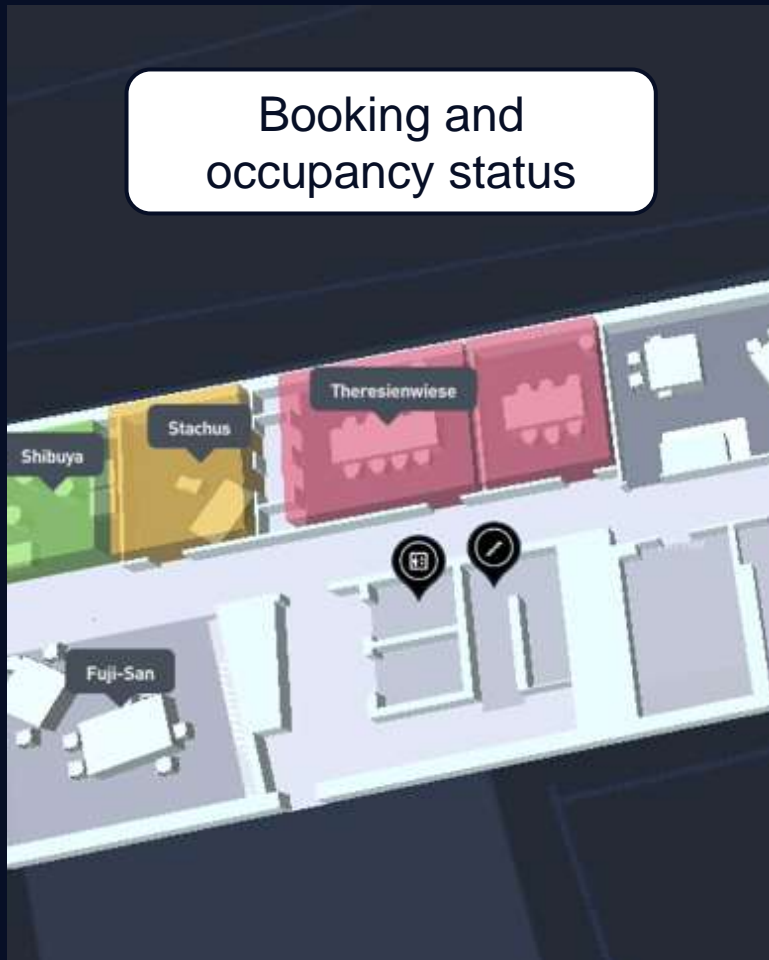
User-controlled automation

- Allow employees to control the workspace environment through mobile apps and desktop interfaces and save energy
- Provide options for personalized settings to accommodate individual preferences for lighting, temperature, and other factors for human wellbeing

Visualization in smart office

Provides transparency for daily usage and awareness

Booking and
occupancy status



Air quality status

Heatmaps on
occupancy





Electricity Dashboard

TODAY

MONTH

YEAR

October 2023



Dashboard



Cost



Usage-by-area



Devices



Emissions



ESG report

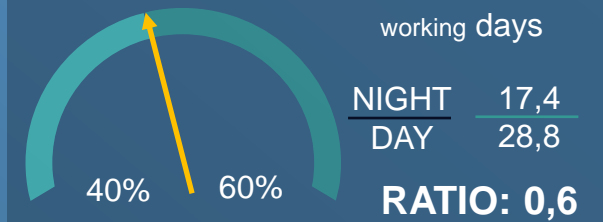
POWER CONSUMPTION (AREAS)



POWER CONSUMPTION (OVERALL)

Oct 2023
1.318,2 kWh

POWER CONSUMPTION NIGHT/DAY RATIO



ENERGY INTENSITY

120 m²
0,385 kWh / m²

POWER CONSUMPTION (busy office)

working days 7 to
 7
604,8 kWh

POWER CONSUMPTION COMPARISON



CARBON FOOTPRINT

kg CO₂
356,57

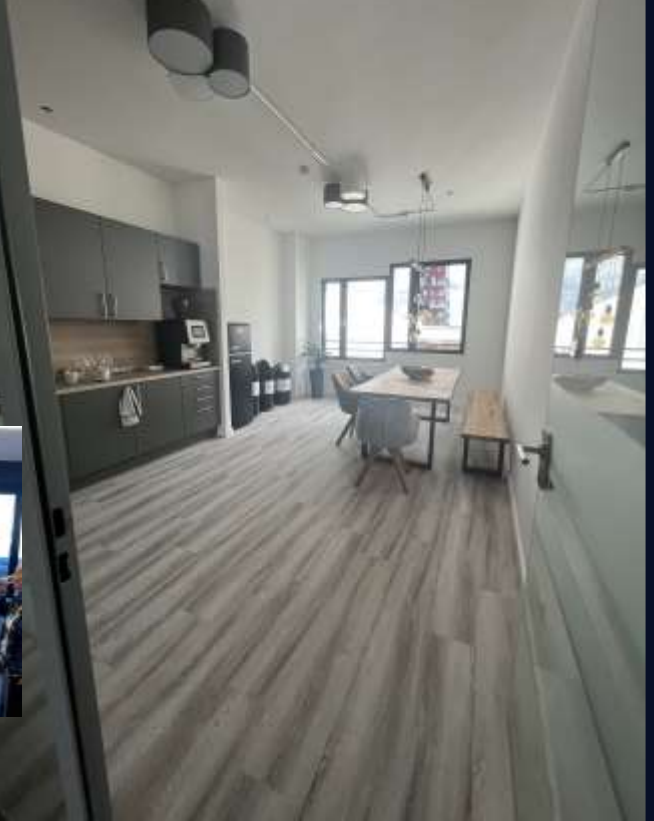
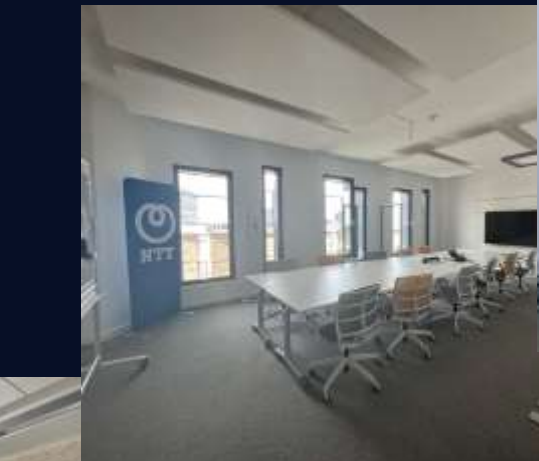
POWER CONSUMPTION (empty office)

off business times
713,4 kWh

CHANGE IN COST



How does it feel?



Our future office: perfectly aligned to NTT DATA sustainability priorities



100% revenues from sustainable-by-design services and products in 20xx

Prosperity Positive

Transform businesses and society for successful growth with 100% sustainable services and solutions involving our end-to-end value chain.



Net zero emissions across our operations by 2030, and value chain by 2040

Planet Positive

Lead by example to disrupt industries for good innovating services and solutions to regenerate our planet.



100% of employees' sustainability engagement "acting today"

People Positive

Shape a better world for all, applying our digital capabilities to improve livelihoods and contribute to a diverse, equitable and inclusive society.

✓ Future of Work

With our framework we enable maximized performance by providing the presented new ways of working for the purpose of wellbeing for all stakeholders, like employees, partners and customers.

✓ Net Zero

Becoming net zero is our company goal. We support that goal with innovative, technical solutions in our framework by monitoring, analyzing and acting in an energy efficient way in our office buildings.

✓ Digital Connectivity & Community Engagement

The innovative digital capabilities used in the framework providing equal access to that technology that improve livelihoods. Furthermore, in partnership with our people and communities we enrich the lives of our global citizens.

Our future smart office framework: A blueprint for current and future office environments

- Improvement of employee and guest experience, health and safety
- Increasing productivity in a changing world of work
- Energy, cost and resource optimization
- Enabled by NTT core competencies:
deep understanding of business processes & technology, system integration & connectivity
- Based on the knowledge and for the benefit of our stakeholders:
Employees, partners and customers
- An innovative, flexible and cross-manufacturer architecture to meet an increasing demand
- Supporting our sustainability agenda: Future of Work, Net Zero and Digital Connectivity

We are #OneNTT.

Voice of our stakeholders

In the NTT smart office “a powerful and secure network infrastructure guarantees reliability and capabilities to communicate easy, quick, fast and safely.”

“NTT and Cisco are strategic partners jointly developing solutions for our customers. In NTT’s smart office customers can experience these solutions and even how they can benefit.”



RÜDIGER WÖLFL

MANAGING DIRECTOR CHANNEL & PARTNERMANAGEMENT, CISCO

What's next?

- Roll-Out to all German offices
- Automation of ESG reporting beginning with electricity metering in German offices
- Further customer demos, opportunities and projects
- Further expansion of the agile working environment
- Integration of the access control system into the IoT landscape
- Estimate market potential "Office-as-a-Service"
- Analysis of the data and derivation of new action areas

NTT Future Smart Office Framework at a glance

Interested in more information? <https://services.global.ntt/about-us/case-studies/ntt-data-in-munich>

- Virtual walk – [new smart office Hamburg](#)
- Virtual walk – [new smart office Munich](#)
- Occupancy and booking [Web Site](#)



